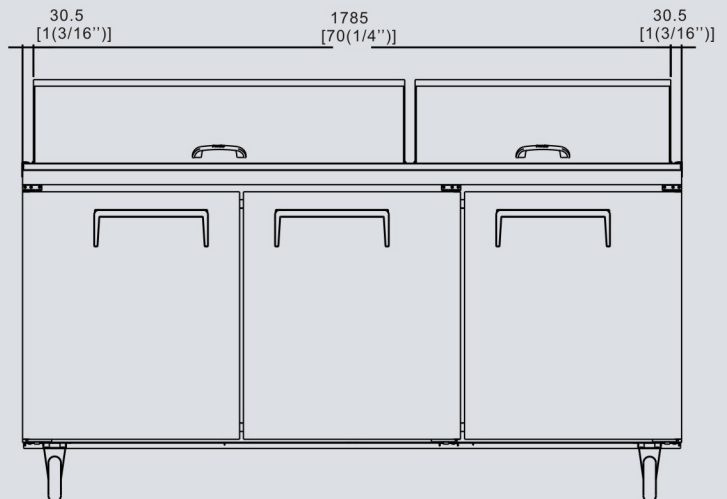
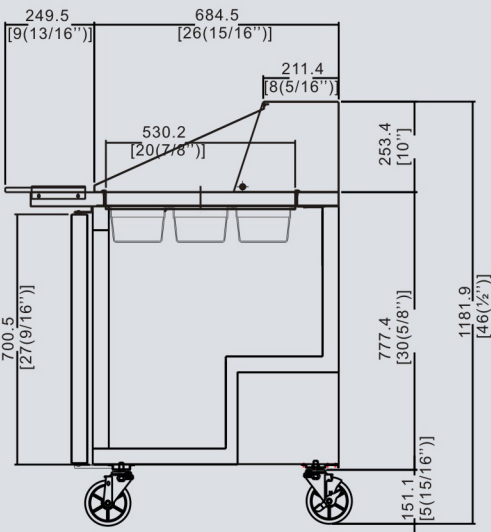
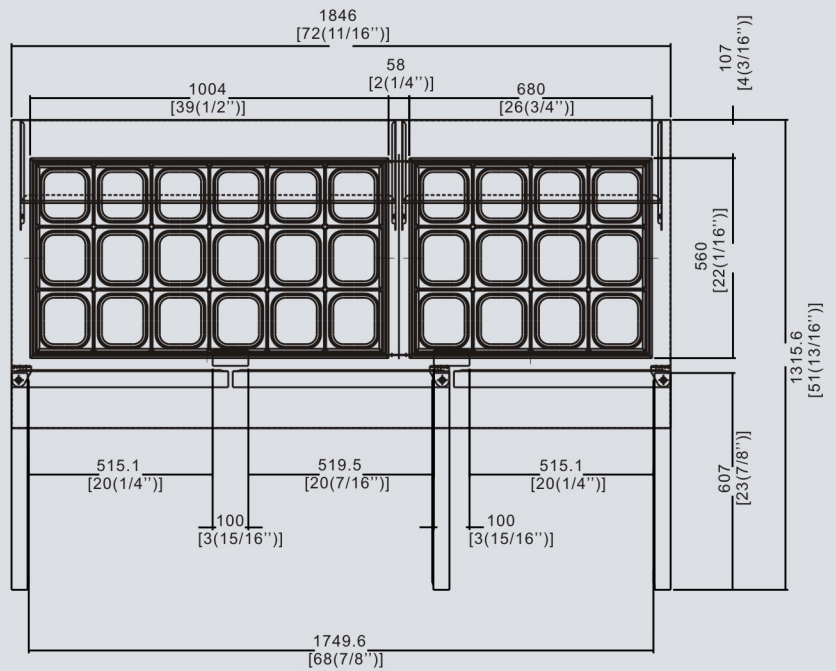


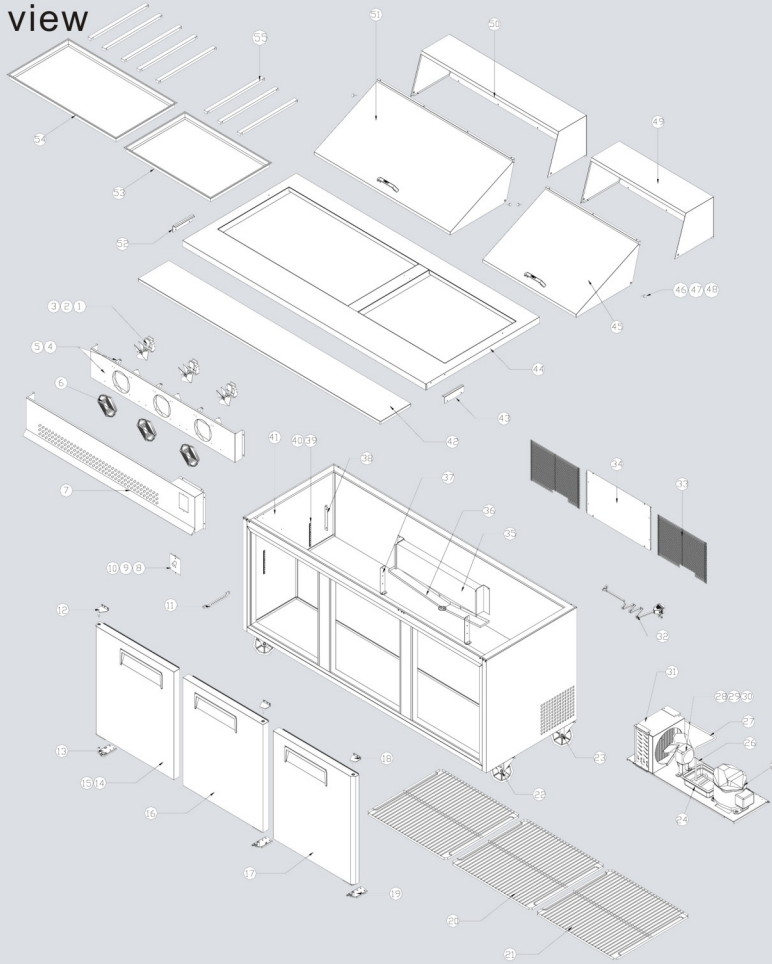
# YSP-72 Three Door Mega Top Sandwich Prep

- Includes stainless pans (27"-12 pan 48"-18 pan 60"-24 pan 72"-30 pan)
- All high quality stainless exterior construction
- All high quality stainless interior
- Oversized forced air refrigeration system for even cooling
- 9 1/2 " cutting board made of low density polyethylene
- Cutting board rail mounts made of high quality stainless rail design for secure mounting and east removal
- Oversized CFC free R-134A refrigeration system very efficient evaporators and condensers
- Complete foamed in place high density insulation for more efficient cooling
- Self closing doors
- Epoxy coated shelves
- Magnetic door gaskets
- Insulated top cover
- Easily over on 4 swivel casters



# YSP-72

## Exploded view



NO	PART NAME	Code	Material	QTY
1	EVAP FAN MOTOR	W0301039		3
2	COOLING FAN BLADE	W0301071		3
3	MOTOR BRACKET	83022003	SUS304-2B	3
4	EVAP FAN COVER	83021303	SUS430-2B	1
5	EVAP FAN AIR GUIDE	83021304	SUS430-2B	6
6	WIRE FAN COVER	W0604072		3
7	EVAP DUCT	83041302	SUS430-2B	1
8	THERMOSTAT	W0302306		1
9	KNOB	W0409837		1
10	THERMOSTAT PANEL	83021804		1
11	TEMPERATURE	W0699011	NSF认证	1
12	TOP HINGE (L)	W0604027	SUS304	1
13	BOTTOM HINGE (L)	W0604029	SUS304	1
14	DOOR ASSY (L)	MSF8304FC01		1
15	DOOR GASKET	W0404519		2
16	DOOR ASSY (M)	MSF8304FC02		1
17	DOOR ASSY (R)	MSF8304FC03		1
18	TOP HINGE (R)	W0604026	SUS304	1
19	BOTTOM HINGE (R)	W0604028	SUS304	1
20	SHELF(MID)	W0402570		1
21	SHELF	W0402171		2
22	CARSTER (BRAKE)	B0604007		2
23	CARSTER	B0604006		2
24	DRAIN PAN	W0411206		1
25	COMPRESSOR	W0201823	FFU130HAX	1
26	DRYER	W0204003		1
27	DRAIN PIPE	W0210053		1
28	CONDENSER FAN MOTOR	W0301033		1
29	CONDENSER FAN BLADE	W0301060		1
30	CONDENSER MOTOR BRACKET	W0604061		1
31	CONDENSER	W0203028	CU	1
32	POWER CORD	W0305134		1
33	MECH COVER	W0402575		2
34	UNIT COVER	83021908	GI	1
35	EVAPORATOR	W0202123	CU	1
36	EVAP DRAIN GUIDE	83041301	SUS430-2B	1
37	SHELF UNIT BRACKET	83022310	SUS430-2B	2
38	EVAP DUCT SUPPORTER	83022708	SUS430-2B	2
39	SHELF STANDARD	24432012	SUS430-2B	12
40	SHELF CLIP	542013	SUS430-2B	12
41	CABINET ASSY			1
42	BOARD KITCHEN	W0499201	MIPS	1
43	BOARD KITCHEN BK(R)	83022703	SUS430-2B	1
44	COUNTER TOP		SUS430-2B	1
45	HOOD LID ASSY	MSF8307AJ01	SUS430-2B	1
46	HOOD HINGE	W0604039	SUS316	2
47	HOOD SPACR(BIG)	W0604040	SUS316	2
48	HOOD SPACR	W0604021	SUS316	2
49	HOOD ASSY (R)	MSF8307AJ02	SUS430-2B	1
50	HOOD ASSY(L)	MSF8308AJ01	SUS430-2B	1
51	HOOD LID ASSY	MSF8308AJ02	SUS430-2B	1
52	BOARD KITCHEN BK(L)	83022702	SUS430-2B	1
53	PAN SUPPORTER ASSY	MSF8307AI02		1
54	PAN SUPPORTER ASSY	MSF8306AI02		1
55	PAN GUIDE	83061904	SUS430-2B	8

# Product Specification

<b>Model</b>	<b>YSP-72</b>		
Exterior Dimensions (inch)	72.7*36.8*46.5		
Interior Dimensions (inch)	69.1*23.6*26.4		
Packing Dimensions (inch)	75.4*37.5*45		
Shelf Dimensions (inch)	2* 【21.5*17.6*1.3】 、 23.6*17.6*1.3		
Shelf QTY (pcs)	3		
Loading capacity per shelf (lbs/pcs)	88		
Capacity (Cu. Ft)	72	Defrost Method	Air Defrost
Net Weight (lbs)	397	Defrost Power (W)	0
Gross Weight (lbs)	419	Climate types	5
Voltage (V/Hz/Ph)	115/60/1	Refrigerant Amonut (oz)	17.6
Power (W)	630	Refrigerant	R-134a
Power consumption (kw/24h)	2.6	Cooling Method	Ventilated