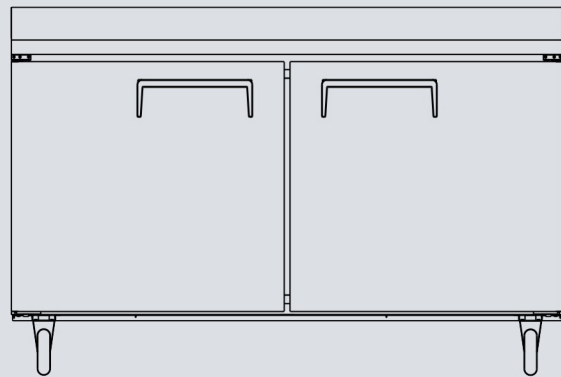
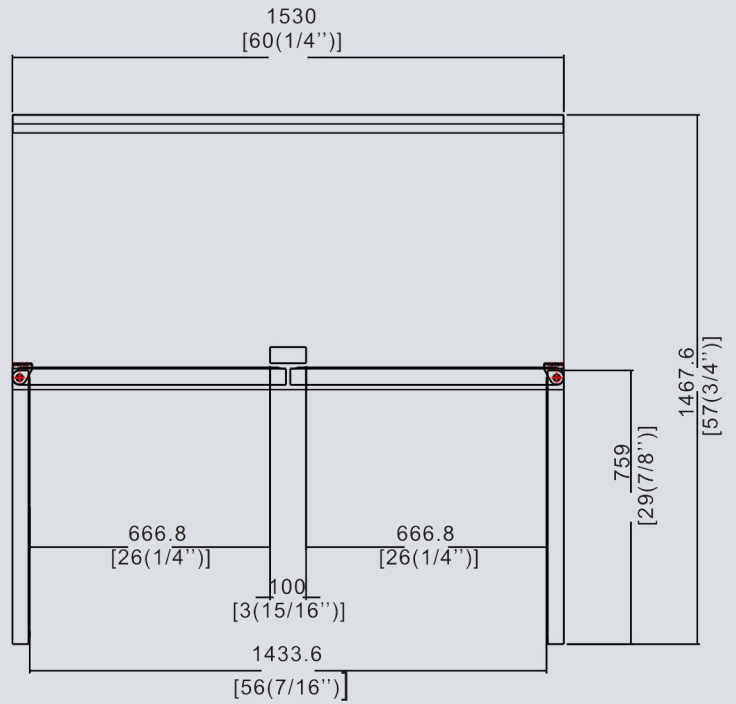
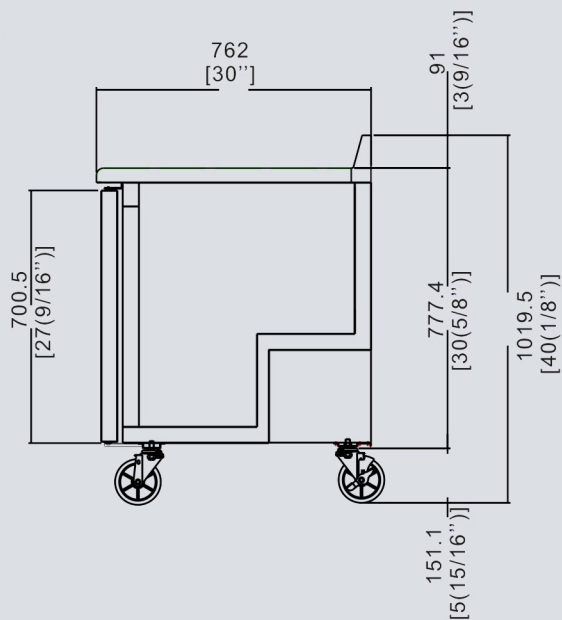


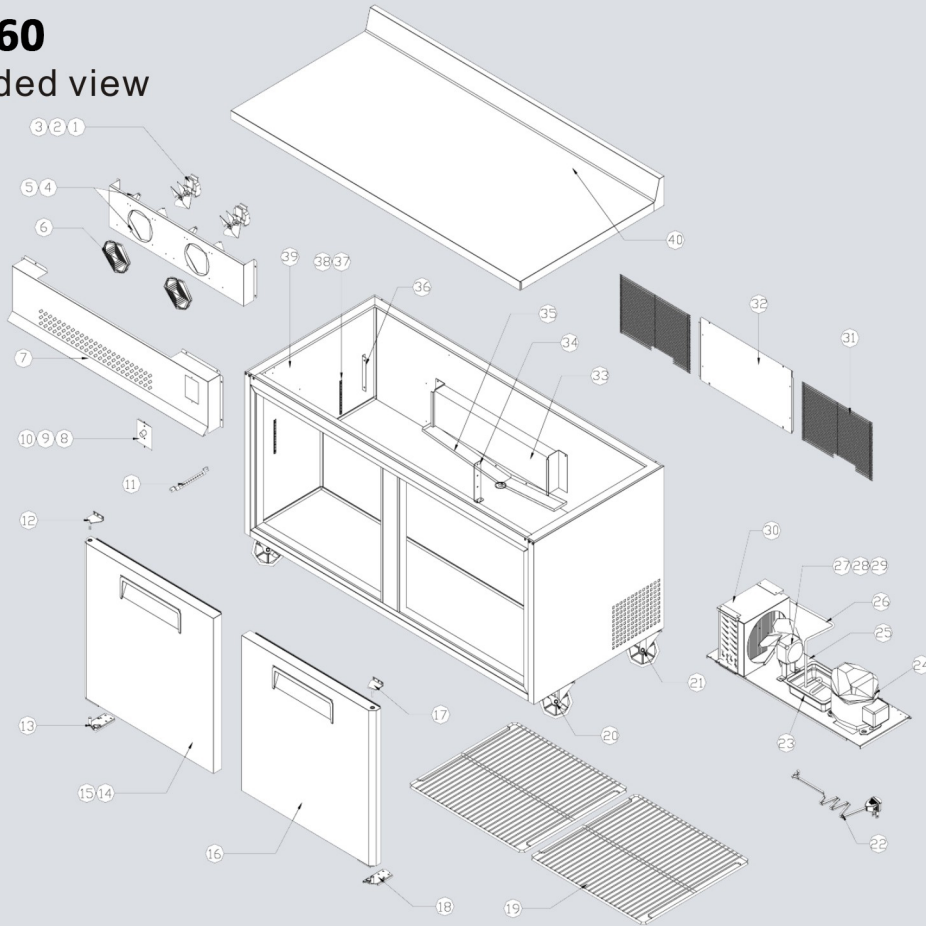
WTC-60 Two Door Work Top Refrigerator

- 5" rear back splash
- All high quality stainless exterior construction
- All high quality stainless interior
- Oversized forced air refrigeration system for even cooling
- Oversized cfc free r-134a refrigeration system very efficient evaporators and condensers
- Complete foamed in place high density insulation for more efficient cooling
- Self closing doors
- Epoxy coated shelves
- Magnetic door gaskets
- Easily over on 4 swivel casters



WTC-60

Exploded view



NO	PART NAME	Code	Material	QTY
1	EVAP FAN MOTOR	W0301039		2
2	COOLING FAN BLADE	W0301071		2
3	MOTOR BRACKET	83022003	SUS304-2B	2
4	EVAP FAN COVER	83021303	SUS430-2B	2
5	EVAP FAN AIR GUIDE	83021304	SUS430-2B	4
6	WIRE FAN COVER	W0604072		2
7	EVAP DUCT	83031301	SUS430-2B	1
8	THERMOSTAT	W0302306		1
9	KNOB	W0409837		1
10	THERMOSTAT PANEL	83021804		1
11	TEMPERATURE	W0699011	NSF 认证	1
12	TOP HINGE (L)	W0604027	SUS304	1
13	BOTTOM HINGE (L)	W0604029	SUS304	1
14	DOOR ASSY (L)	MSF8303FC01		1
15	DOOR GASKET	W0404519		2
16	DOOR ASSY (R)	MSF8303FC02		1
17	TOP HINGE (R)	W0604026	SUS304	1
18	BOTTOM HINGE (R)	W0604028	SUS304	1
19	SHELF	W0402569		2
20	CARSTER (BRAKE)	B0604007		2
21	CARSTER	B0604006		2
22	POWER CORD	W0305134		1
23	DRAIN PAN	W0411206		1
24	COMPRESSOR	W0201824	FFI8.5HAK	1
25	DRYER	W0204003		1
26	DRAIN PIPE	W0210053	CU	1
27	CONDENSER FAN MOTOR	W0301033		1
28	CONDENSER FAN BLADE	W0301060		1
29	CONDENSER MOTOR BRACKET	W0604061		1
30	CONDENSER	W0203035	CU	1
31	MECH COVER	W0402575		2
32	UNIT COVER	83021908	GI	1
33	EVAPORATOR	W0202113	CU	1
34	EVAP DRAIN GUIDE	83021301	SUS430-2B	1
35	SHELF UNIT BRACKET	83022310	SUS430-2B	1
36	EVAP DUCT SUPPORTER	83022708	SUS430-2B	2
37	SHELF STANDARD	24432012	SUS430-2B	8
38	SHELF CLIP	542013	SUS430-2B	8
39	CABINET ASSY			1
40	COUNTER TOP		SUS430-2B	1

Product Specification

Model	WTC-60		
Exterior Dimensions (inch)	60.2*30*40.1		
Interior Dimensions (inch)	56.7*23.6*26.7		
Packing Dimensions (inch)	63*33.5*40.6		
Shelf Dimensions (inch)	27.6*17.6*1.3		
Shelf QTY (pcs)	2		
Loading capacity per shelf (lbs/pcs)	88		
Capacity (Cu. Ft)	60	Defrost Method	Air Defrost
Net Weight (lbs)	231	Defrost Power (W)	0
Gross Weight (lbs)	253	Climate types	5
Voltage (V/Hz/Ph)	115/60/1	Refrigerant Amonut (oz)	11.6
Power (W)	390	Refrigerant	R-134a
Power consumption (kw/24h)	1.7	Cooling Method	Ventilated