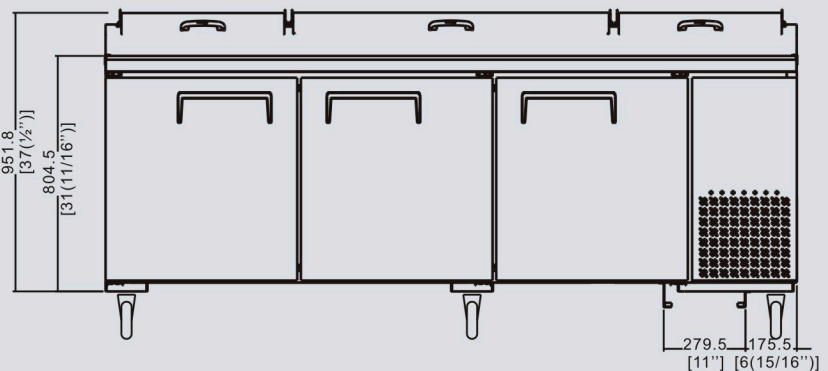
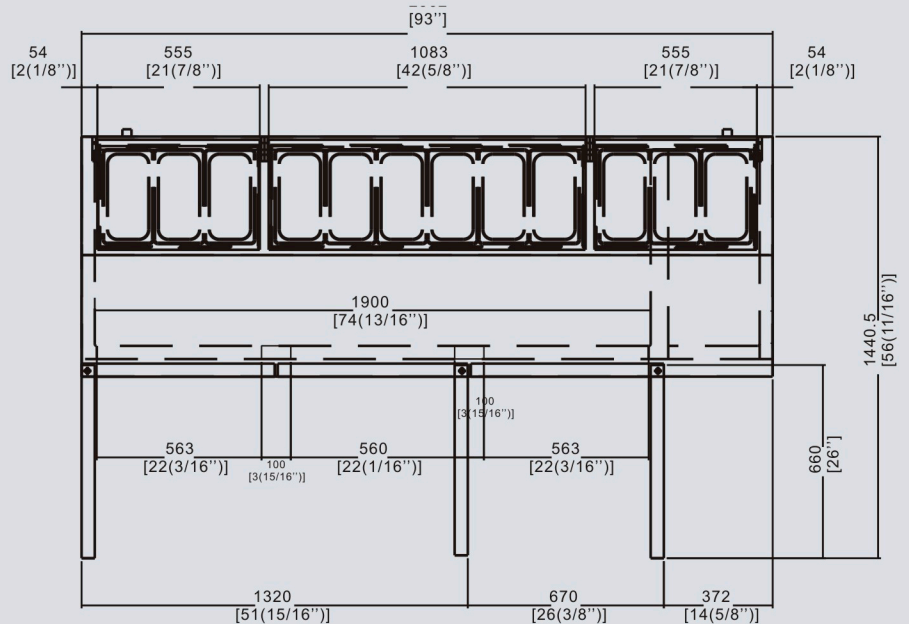
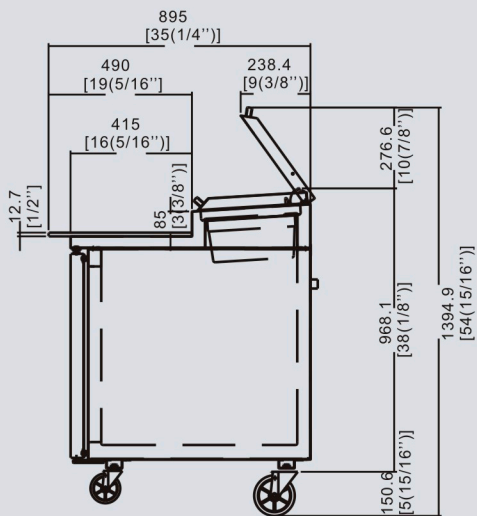


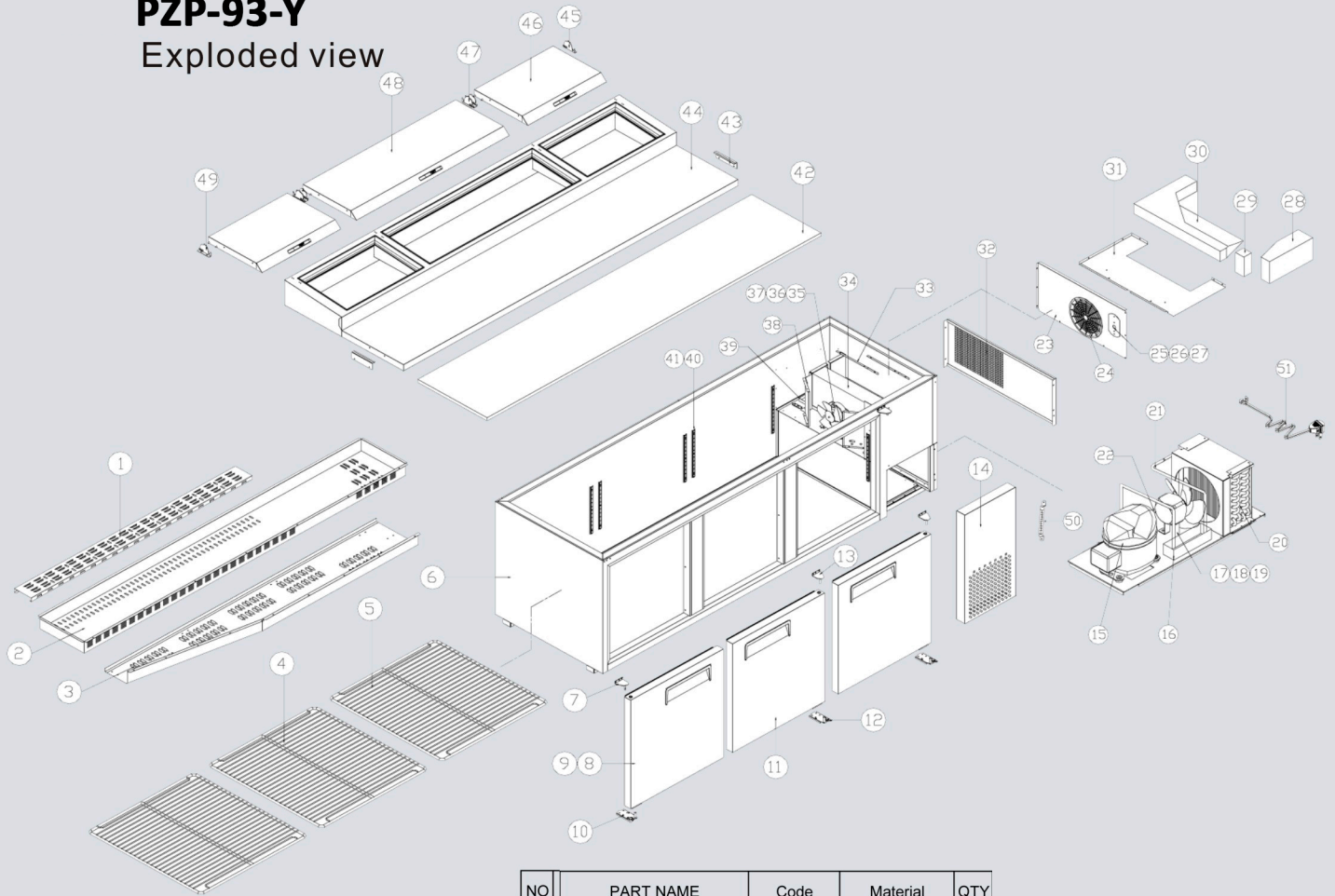
PZP-93-Y Three Door Pizza Prep Unit

- Extra Deep 20" Cutting Work Surface
- Side Mount Compressor For Extra Deep Storage Space For Dough Boxes
- All High Quality Stainless Exterior Construction
- All High Quality Stainless Interior
- Oversized Forced Air Refrigeration System For Even Cooling
- Cutting Board Rail Mounts Made Of High Quality Stainless Rail Design For Secure Mounting And East Removal
- Oversized CFC Free R-134A Refrigeration System Very Efficient Evaporators And Condensers
- Complete Foamed In Place High Density Insulation For More Efficient Cooling
- Self Closing Doors
- Epoxy Coated Shelves
- Magnetic Door Gaskets
- Insulated Top Cover
- Easily Moved On 4 Swivel Casters



PZP-93-Y

Exploded view



NO	PART NAME	Code	Material	QTY
1	PAN DUCT COVER	82031703	SUS430-2B	1
2	PAN DUCT	82031701	SUS430-2B	1
3	AIR PAN DUCT PANEL	82031702	SUS430-2B	1
4	SHELF (M)	W0402572		2
5	SHELF (LR)	W0402573		4
6	CABINET FOAM			1
7	TOP HINGE(L)	W0604027		1
8	DOOR (L)	MPF8202FC01		1
9	DOOR GASKET	W0404565		3
10	BOTTOM HINGE (L)	W0604029		1
11	DOOR (R)	MPF8202FC02		2
12	BOTTOM HINGE (R)	W0604028	SUS304	2
13	TOP HINGE(R)	W0604026	SUS304	2
14	UNIT FRONT COVER	82011913	SUS430-2B	1
15	COMPRESSOR	W0201825	NEK2140Z-269GG92	1
16	DRAIN PAN	W0411208		1
17	CONDENSER FAN MOTOR	W0301033		1
18	CONDENSER FAN BLADE	W0301062		1
19	CONDENSER MOTOR BRACKET	80061601		1
20	CONDENSER	W0203038	CU	1
21	DRAIN PIPE	W0210135	CU	1
22	DRYER	W0204003		1
23	EVA DUCT	82011705		1
24	EVA MOTOR FAN COVER	W0409864		1
25	THERMOSTAT	W0302306		1
26	KNOB	W0409837		1
27	THERMOSTAT PANEL	83021804		1
28	AIR GUIDE PAD (R)	W0804031	EPS	1
29	AIR GUIDE PAD (M)	W0804032	EPS	1
30	AIR GUIDE PAD (L)	W0804030	EPS	1
31	EVAP TOP COVER	82011702	SUS430-2B	1
32	UNIT SIDE COVER	82011914	SUS430-2B	1
33	AIR GUIDE PAD(B)	82011903		2
34	EVAP	W0202126	CU	1
35	EVAP FAN MOTOR	W0301029		1
36	EVAP FAN BLADE	82012302		1
37	EVAP MOTOR BRACKET			1
38	EVAP FAN MOTOR AIR GUIDE	82011909	SUS430-2B	2
39	EVAP DRAIN PAN	82011908	SUS430-2B	1
40	SHELF STANDARD	24432012	SUS430-2B	12
41	SHELF CLIP	542013	SUS430-2B	24
42	BOARD KITCHEN	W0499217	MIPS	1
43	BOARD KITCHEN BRACKET	82012701	SUS304	2
44	COUNTER FOAM			1
45	HOOD LID HINGE (R)	82032903	SUS304	2
46	HOOD LID ASSY(R)	MPF8202AJ02	SUS430-2B	2
47	HOOD LID HINGE (M)	82032901	SUS304	2
48	HOOD LID ASSY(L)	MPF8202AJ01	SUS430-2B	1
49	HOOD LID HINGE (L)	82032902	SUS304	1
50	TEMPERATURE	W0699011	NSF 认证	1
51	POWER CORD	W0305134		1

Product Specification

Model	PZP-93-Y		
Exterior Dimensions (inch)	93*35.2*44		
Interior Dimensions (inch)	89.4*26.4*26.4		
Packing Dimensions (inch)	95.7*35.2*42.9		
Shelf Dimensions (inch)	2* 【23.8*25.6】 、 25*25.6		
Shelf QTY (pcs)	3		
Loading capacity per shelf (lbs/pcs)	88		
Capacity (Cu. Ft)	93	Defrost Method	Air Defrost
Net Weight (lbs)	697	Defrost Power (W)	0
Gross Weight (lbs)	719	Climate types	5
Voltage (V/Hz/Ph)	115/60/1	Refrigerant Amonut (oz)	10.6
Power (W)	650	Refrigerant	R-404a
Power consumption (kw/24h)	3.6	Cooling Method	Ventilated